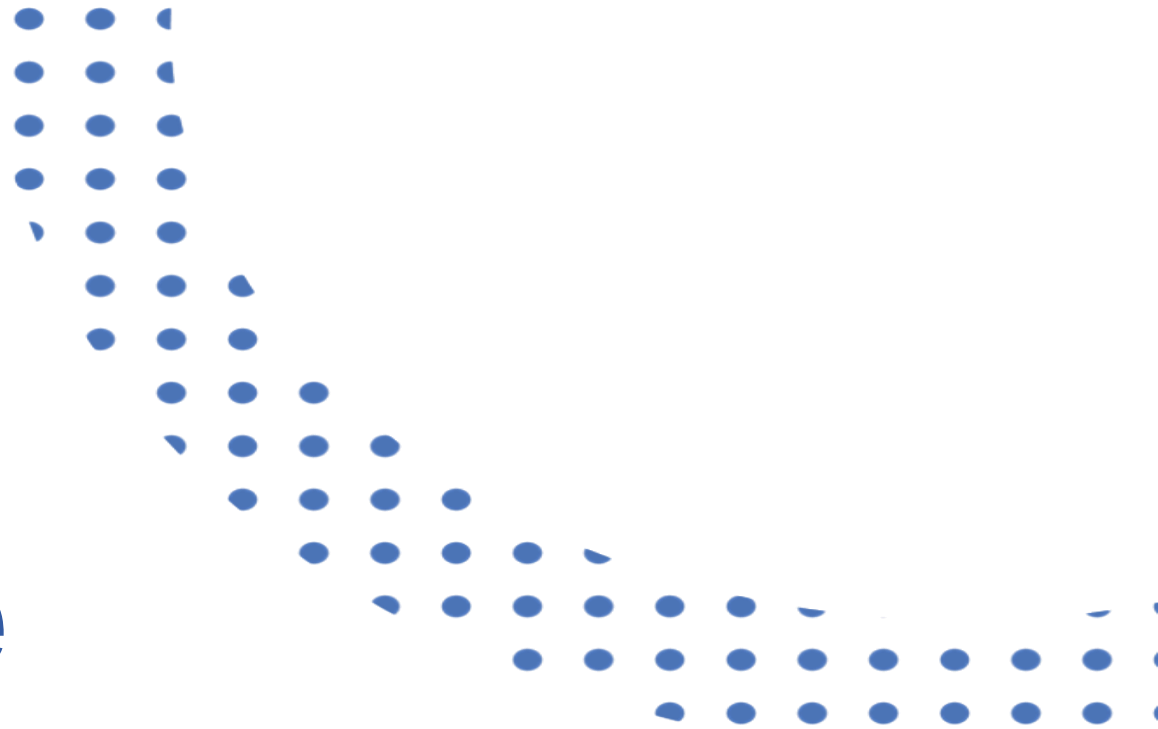


# The Personal Learning Device (PLD) Initiative

Briefing for Parents

A PRESENTATION BY  
MINISTRY OF EDUCATION, SINGAPORE



# Yishun Town Secondary School's PLD



**A13 Bionic Processor, 3GB Memory,  
64GB Storage, 10.2" screen size**

The school will be using the **Apple iPad 9th Gen** for teaching and learning.

Total cost of the bundle includes 3-year warranty and 3-year insurance with GST:

**\$882.90**



# Intended Outcomes of the PLD Initiative

The use of the PLD for teaching and learning aims to:



**Support the Development of Digital Literacy**



**Support Self-Directed and Collaborative Learning**



**Enhance Teaching and Learning**



# How will your child/ward use the PLD?

At Yishun Town Secondary School, your child/ward will be using the PLD to

- Leverage on Cloud platforms such as SLS, MS Teams and Google Drive to curate and self-manage learning.



# How will your child/ward use the PLD?

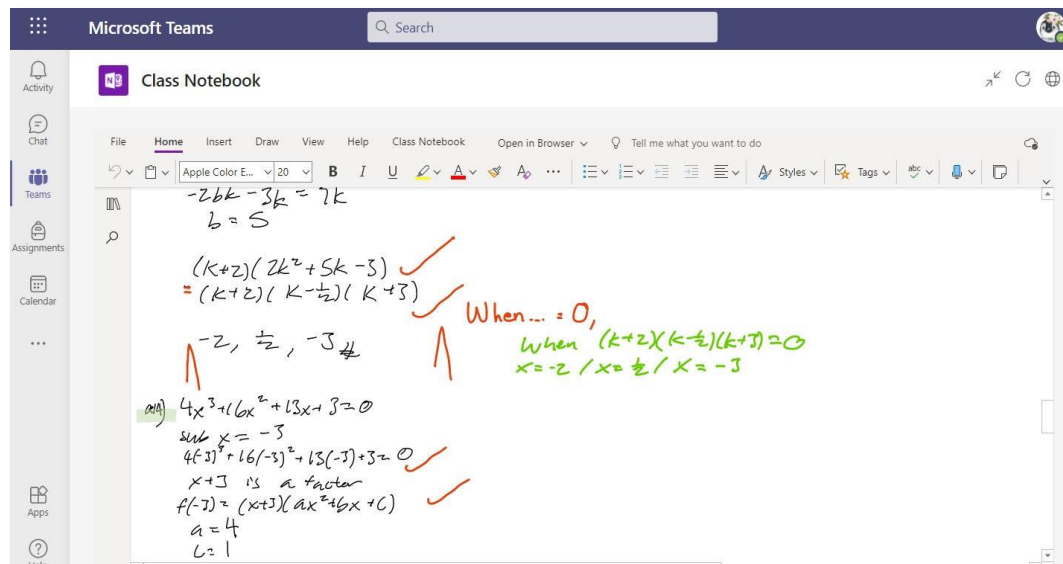
- At Yishun Town Secondary School, your child will be using the PLDs to
- ✓ **Support curricular and pedagogical innovation**
- Flipped classrooms will allow students to access materials before and outside class and have in-depth discussions during lessons
- Facilitation of differentiated instruction to better customize lessons for students at different readiness levels



# How will your child/ward use the PLD?

At Yishun Town Secondary School, your child will be using the PLDs to

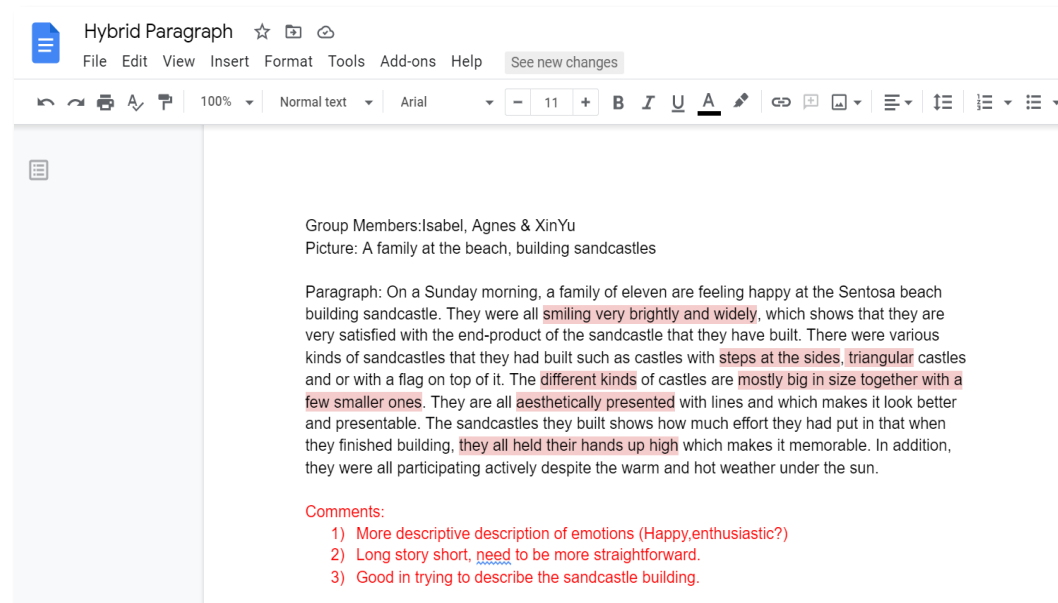
- ✓ **Strengthen feedback and monitoring of students' learning**
- Real time feedback on learning provided to teachers using SLS, MS Teams and Google Classroom



# How will your child/ward use the PLD?

At Yishun Town Secondary School, your child will be using the PLDs to

- ✓ **Develop new media literacies and Web 2.0 competencies**
- Co-creation of information through the use of Google Slides and Google Docs
- Communication and collaboration for project work





# Supporting Students in the Safe and Effective Use of the Devices

The school has measures in place to enable a safer digital environment for learning with the use of PLDs, e.g.

- School rules on digital device use
- Classroom management and routines
- Cyber Wellness Education in CCE
- Partnering parents/guardians to support students in their use of technology for learning
- Device Management Application (DMA) to support a safer digital environment for learning





# Device Management Application (DMA) Installation

- Your child's/ward's PLD will be installed with a DMA to provide a safer digital environment for learning.
- DMA will be installed after the collection of the device. Students will be guided on the installation.
- The installation of DMA applies to both devices purchased through the school and any student-owned devices that parents/guardians opt for the student to use in lieu of the school-prescribed PLD.
- The DMA will be funded by MOE and will be uninstalled from the device when your child/ward graduates/leaves the school.



# Providing Parents/Guardians with Greater Choice of After-School DMA Parent Options

The following tables outline the different levels of restrictions, controls, and monitoring for the different DMA options after school hours.

Default	Option A	Option B
<p><b>In-school DMA settings will continue after school hours</b></p>	<p><b>Parents/Guardians can modify the DMA settings after school hours</b></p>	<p><b>Parents/Guardians can choose to disable DMA after school hours</b></p>
<p>For parents/guardians who want their child’s/ward’s use of the device to be restricted only to teaching and learning, and prefer to leave it to the school to decide on DMA settings after school hours.</p>	<p>For parents/guardians who want more leeway over the use of the device, and prefer to take charge of the level of restrictions for their child’s/ward’s use of the device after school hours.</p>	<p>For parents/guardians who do not want their child’s/ward’s use of the device to be regulated by DMA after school.</p>

- Having default school settings continue after school hours is the best option for parents/guardians who prefer not to, or do not feel ready to manage their child’s/ward’s device use on their own.
- Parents/guardians can request to change their choice of DMA settings at any time.



# Data Collected by the DMA

The DMA does **NOT** collect any of the following data:

- Login IDs and passwords entered into websites or into any applications
- Actions performed (e.g. posts, online comments, items added to a shopping cart, etc.) when visiting websites and using apps
- Documents and photos stored in the PLDs
- PLD location
- Webcam videos and microphone recordings



# Additional Resources for Parents

To support you in keeping your child/ward safe online, you may refer to these additional resources:

- Parent Handbooks (I) and (II) on Learning with a Personal Learning Device (shared by the school)
- Parent Kit on Cyber Wellness for Your Child (<https://go.gov.sg/moe-cyber-wellness>)
- Parent Kit on Raising a Digitally Smart Child (<https://go.gov.sg/moe-raising-a-digitally-smart-child>)
- Parenting with MOE: Instagram Live session on Raising Digitally Smart Kids (<https://go.gov.sg/iglive-raising-digitally-smart-kids>)
- Schoolbag article 'Keeping our teens safe online' (<https://www.schoolbag.edu.sg/story/keeping-our-teens-safe-online>)
- MOE Cyber Wellness Programme (<https://www.moe.gov.sg/education-in-sg/our-programmes/cyber-wellness>)
- Media Literacy Council's Resources for Parents (<https://go.gov.sg/better-internet-sg>)
- National Library's Learning & Information Literacy Resources (<https://sure.nlb.gov.sg/>)
- TOUCH Community Services (<https://help123.sg>)



# Yishun Town Secondary School's PLD



**A13 Bionic Processor, 3GB Memory,  
64GB Storage, 10.2" screen size**

The school will be using the **Apple iPad 9th Gen** for teaching and learning.

Total cost of the bundle includes 3-year warranty and 3-year insurance with GST:

**\$882.90**



# Yishun Town Secondary School's PLD



The school chose the device because of:

- Portability
- Durability
- T&L Affordances

**A13 Bionic Processor, 3GB Memory,  
64GB Storage, 10.2" screen size**



# Technical Support for Students' Devices

Technical support will be provided to students through:

- Service Desk set up in school during breaks and after school on a weekly basis
  - Troubleshooting of device issues
  - Solve connectivity issues
  - Collection of devices to be sent for repairs
- iPad service centres
  - Repair of devices (hardware issues)





# Funding Support for Singapore Citizen (SC) Students

- **The cost of the device bundle can be paid using your child's/ward's Edusave account**, after setting aside provision for payment of miscellaneous fees.
- To ensure the affordability of devices, MOE has provided Edusave top-ups of \$200 in 2020 to 2022, and \$300 in 2023, to all eligible Singaporean students in primary and secondary schools.
- This is on top of the annual \$290 credited into the Edusave account for Secondary School students and \$230 for Primary School students.



# Funding Support for Singapore Citizen (SC) Students

- For SC students who are on MOE Financial Assistance Scheme or whose family's monthly income meets the following criteria:

Gross Household Income (GHI)  $\leq$  \$3,000, or

Per Capita Income (PCI)  $\leq$  \$750

MOE will subsidise 50% of device bundle cost or \$350, whichever is lower.

- The remaining amount will be payable from the students' Edusave account. If there is insufficient balance in the students' Edusave account for the remaining amount, MOE will provide additional subsidy so that the cash out-of-pocket (OOP) is \$0.



# Funding Support for Singapore Citizen (SC) Students

- For SC students whose family's monthly income is:

$\$3,000 < \text{Gross Household Income (GHI)} \leq \$4,400$ , or

$\$750 < \text{Per Capita Income (PCI)} \leq \$1,100$

MOE will subsidise 30% of device bundle cost or \$200, whichever is lower.

- The remaining amount will be payable from the students' Edusave account. If there is insufficient balance in the students' Edusave account for the remaining amount, MOE will provide additional subsidy so that the cash out-of-pocket (OOP) is not more than \$50.



# Funding Support for Singapore Citizen (SC) Students

- SC students whose family's monthly Gross Household Income (GHI) > \$4,400 or monthly Per Capita Income (PCI) > \$1,100, no subsidy will be provided. Parents/Guardians can use their child's/ward's Edusave or cash to defray the device bundle cost.



WHAT'S NEXT?

# Parental Consent for Procurement



**Parents with Singpass** can access the **Parental Consent for the Purchase of Personal Learning Device (PLD)** via the following link:

<https://go.gov.sg/pdlpadmin>

\* Parents/Guardians without Singpass can request for the hardcopy letter via your child's/ward's form teacher.



Yishun Town  
Secondary School

# WHATS NEXT?

Time Frame	Activity
5 – 11 January 2024	Submit <b>Parental Consent for the Purchase of Personal Learning Device (PLD)</b> via the FormSG link on the previous slide. Parents without access to Singpass can submit their consent via hardcopy, which includes the following: <ul style="list-style-type: none"> <li>• Intent to Purchase Personal Learning Device (PLD)</li> <li>• Standing Order for Use of Edusave Account (for Singapore Citizens)</li> <li>• Authorisation Form</li> </ul>
By 8 March 2024	(If required) Parent/Guardian to make payment via <ul style="list-style-type: none"> <li>▪ Giro</li> <li>▪ SGQR (Nets/PayNow)</li> <li>▪ SAM channels</li> <li>▪ Cash and cheque at school General Office</li> </ul>
End of Term 1, 2024	Collection of devices by students



# Collection of Devices

Your child/ward will be collecting his/her device in school **from Term 1 Week 8.**

If you would like to verify the condition of the device during collection with your child/ward:

- You may arrange to collect the device **at the vendor's service/collection centre\*** or appoint an adult proxy to do so.
- Your child/ward would need to bring the device to school and arrange for the school's IT department to install the DMA.

Please approach the school for further advice or clarification if you would like to make this arrangement.

\* Parents/Guardians (or adult proxy) will **not** be able to collect the PLD from the school.





# Important Contacts / Helplines

To access / find out more about...	Contact / Helpline
This deck of slides	<a href="https://www.yishuntownsec.moe.edu.sg/">https://www.yishuntownsec.moe.edu.sg/</a>
Edusave balance	6260 0777
Financial assistance	6758 7219

